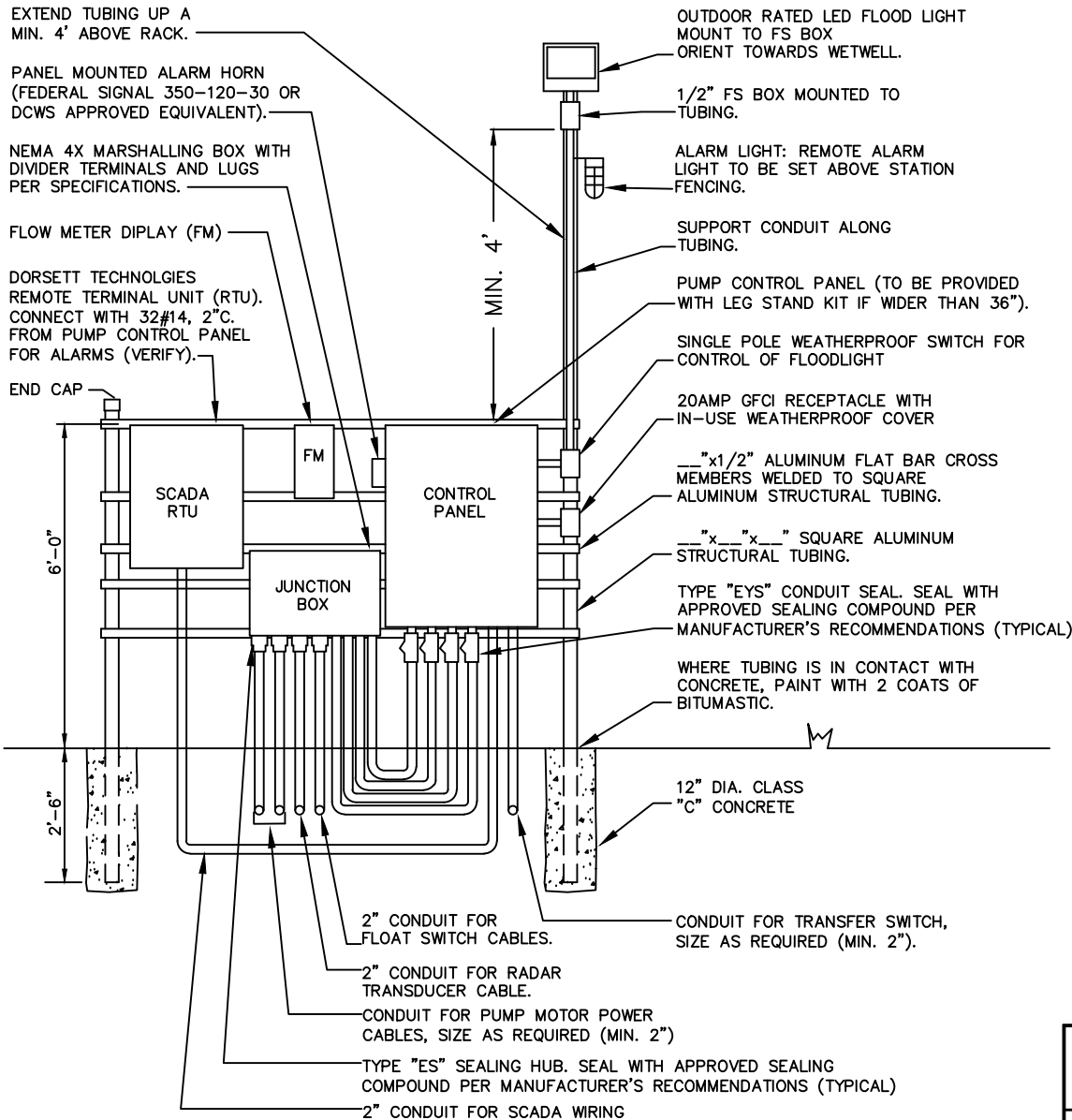
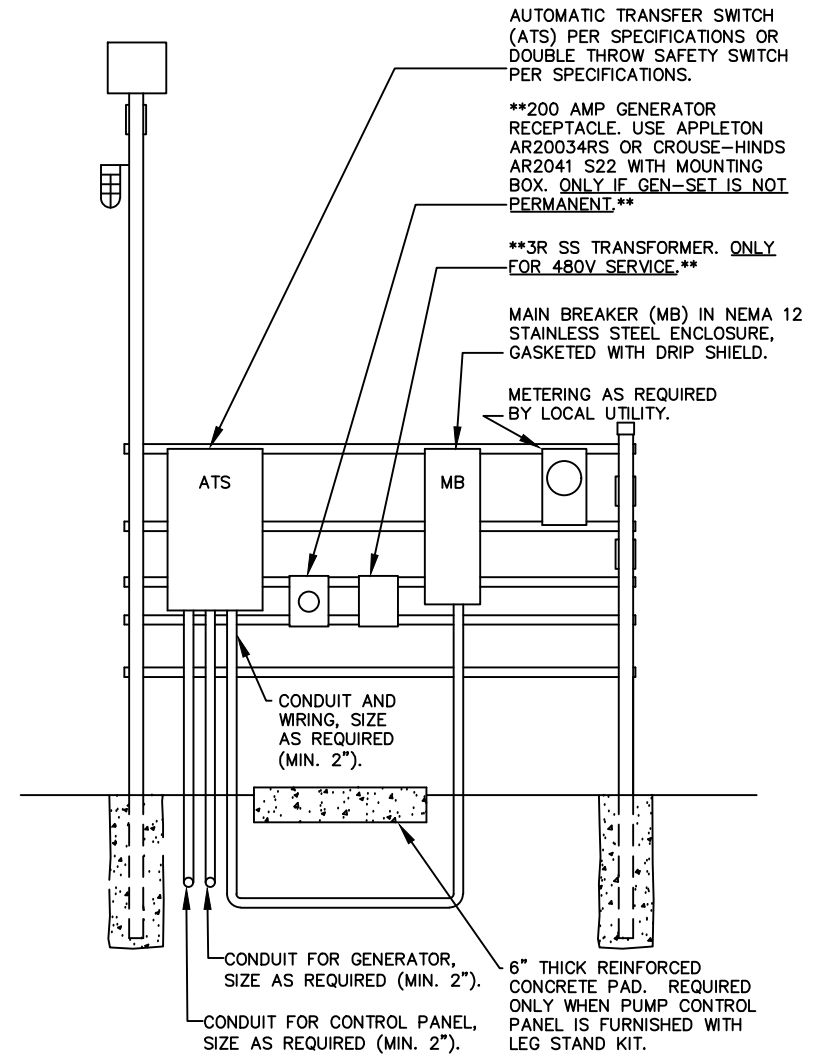


FRONT ELEVATION (LEFT TO RIGHT)



REAR ELEVATION (LEFT TO RIGHT)



NOTES:

1. ALL ELECTRICAL CONDUIT UNDERGROUND TO BE NMC SCHEDULE 80.
2. ALL ELECTRICAL CONDUIT ABOVE GROUND TO BE RIGID ALUMINUM CONDUIT (RAC)
3. ALL FASTENERS SHALL BE 316 SS.
4. WATER TIGHT ALUMINUM HUBS AT ALL CABINET PENETRATIONS.
5. ALL TUBING IN CONTACT WITH CONCRETE, PAINT WITH 2 COATS OF BITUMASTIC.

DORCHESTER COUNTY WATER & SEWER	
TYPICAL PUMP STATION ELECTRICAL	DRAWING: S-17
DATE: <u>FEB 2026</u>	DRAWN BY: <u>STL</u>
SCALE: <u>NTS</u>	APPROVED BY: <u>GAA</u>